

a solo exhibition by

# ANN NIU 牛安

15 March - 31 May 2024

一切都始於初



Pillow P2 枕系列 | colour on board 43 x 40 cm 2015



# ANN NIU 牛安



Having trained in Chinese calligraphy since early age, Ann utilises distinctive calligraphy techniques in her paintings, expressing various special symbols and imageries.

A Shanghai native, Ann Niu has been all over the world. Trained with master Chinese calligraphers from young age, she studied in Shanghai and Tokyo and has lived in South Korea and the United States. She has had exhibitions in Shanghai, Hong Kong, Taipei, Japan, Australia, Singapore, the Netherlands, France, and the United States since 2000. Her expressive works have been gracing many public places, such as Shanghai XinTianDi, Hong Kong Joyce Boutique and Shanghai Moca's Glass Mural. From 2001 to now, Ann Niu's works have been collected by Singapore National Art Museum, America Blackstone Group, Schawazman Foundation, Hong Kong Shanghai HSBC, and many private collectors all over the world.

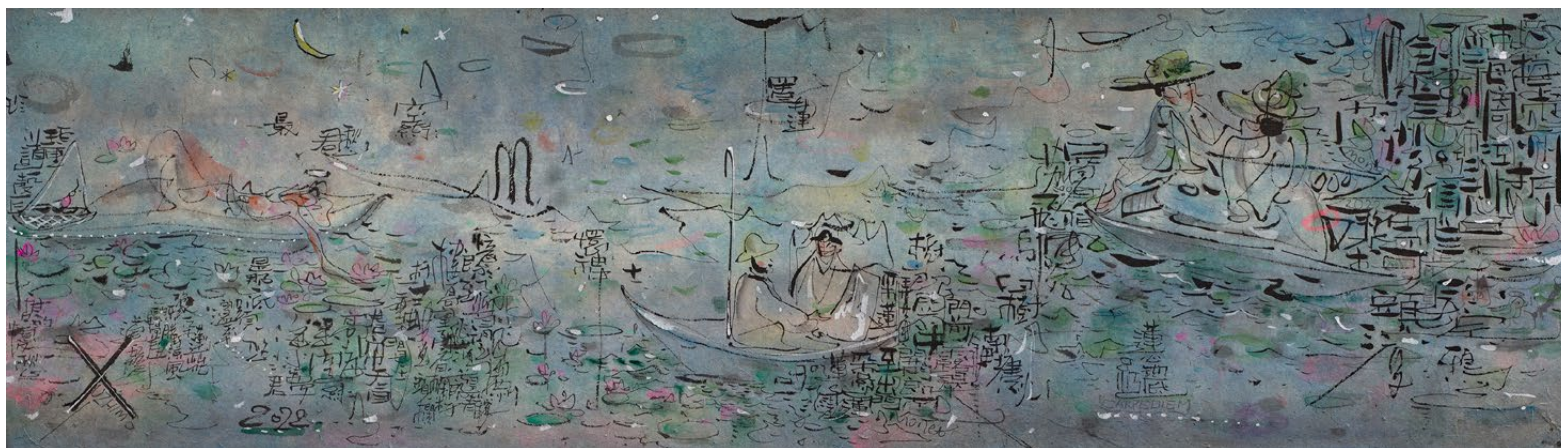
牛安是上海人，她的足迹遍布世界各地。自幼師從中國書法大師，曾在上海和東京學習，並在韓國和美國生活過。自 2000 年以來，她在上海、香港、台北、日本、澳大利亞、新加坡、荷蘭、法國和美國舉辦過展覽。她富有表現力的作品在許多公共場所熠熠生輝，例如上海新天地、香港 Joyce Boutique 精品店和上海當代藝術館的玻璃壁畫。從 2001 年到現在，牛安的作品已被新加坡國立美術館、美國黑石集團清華大學蘇世民學院教育基金會、香港上海滙豐銀行和世界各地的許多私人收藏家收藏。



石在 - 莫奈花园  
**Scholar Stone - Monet's Garden**  
150 x 150 cm  
布面丙烯颜料 acrylic on canvas, 2022







新月荷塘 致敬莫奈园

**A Lotus Pond with Crescent**

40 x 144 cm each

纸本水墨 ink on paper, 2022





*"I have always wanted to draw a Garden of Eden in my heart with the unconscious lines of my pen. There are wind, beaches, gardens, Taihu Lake rocks, moods and poetry there. In this mysterious painting ambience, there are blessings for the passing years, the year of dragon, myths, admiration and tribute to the impressionist master Monet and the literary master Rabindranath Tagore."*



诗人生如夏花 P1  
Poet Summer Flowers P1  
43 x 41 cm  
纸本水墨 ink on paper, 2022



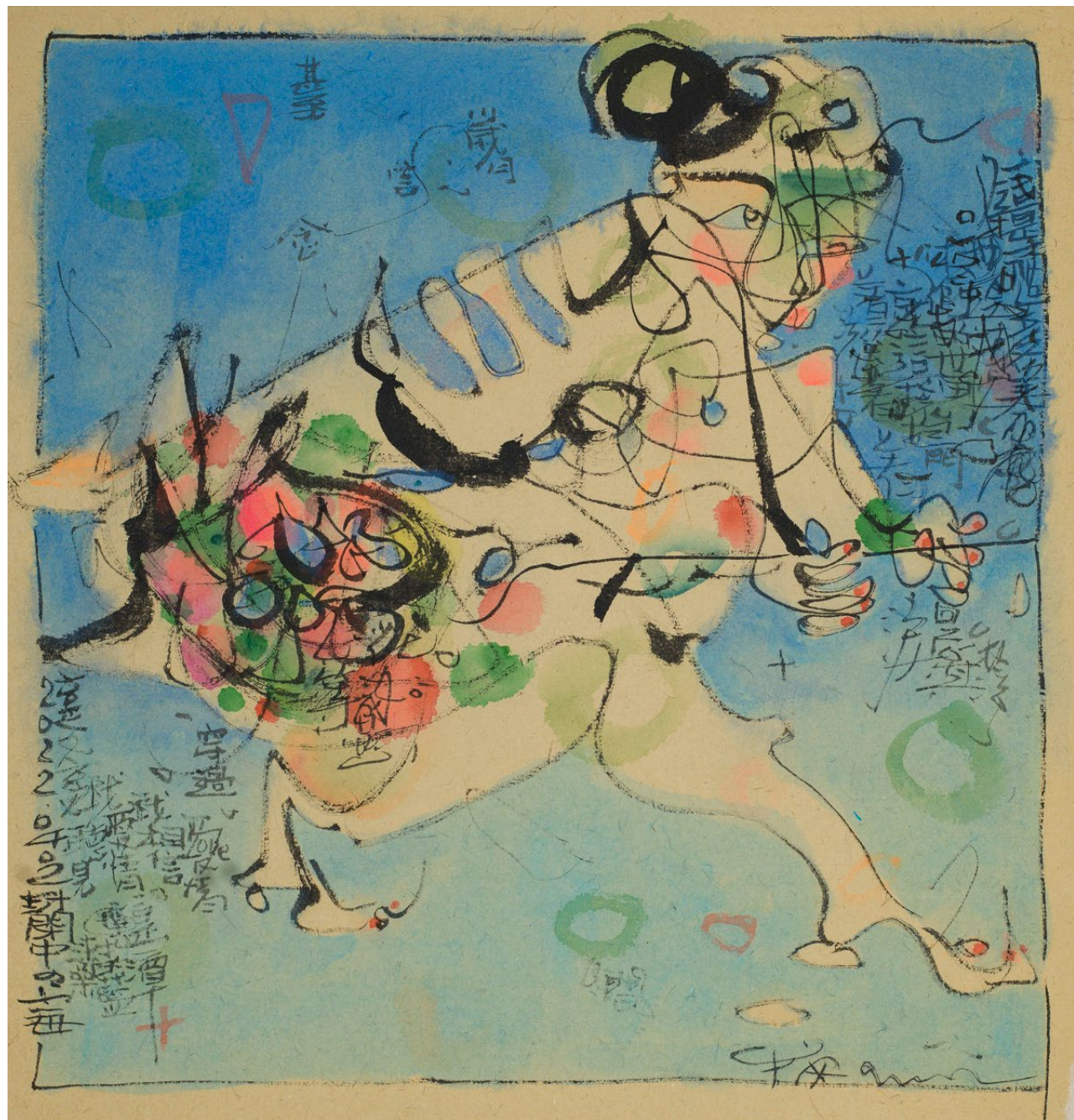


诗人生如夏花 P3  
Poet Summer Flowers P3  
43 x 41 cm  
纸本水墨 ink on paper, 2022



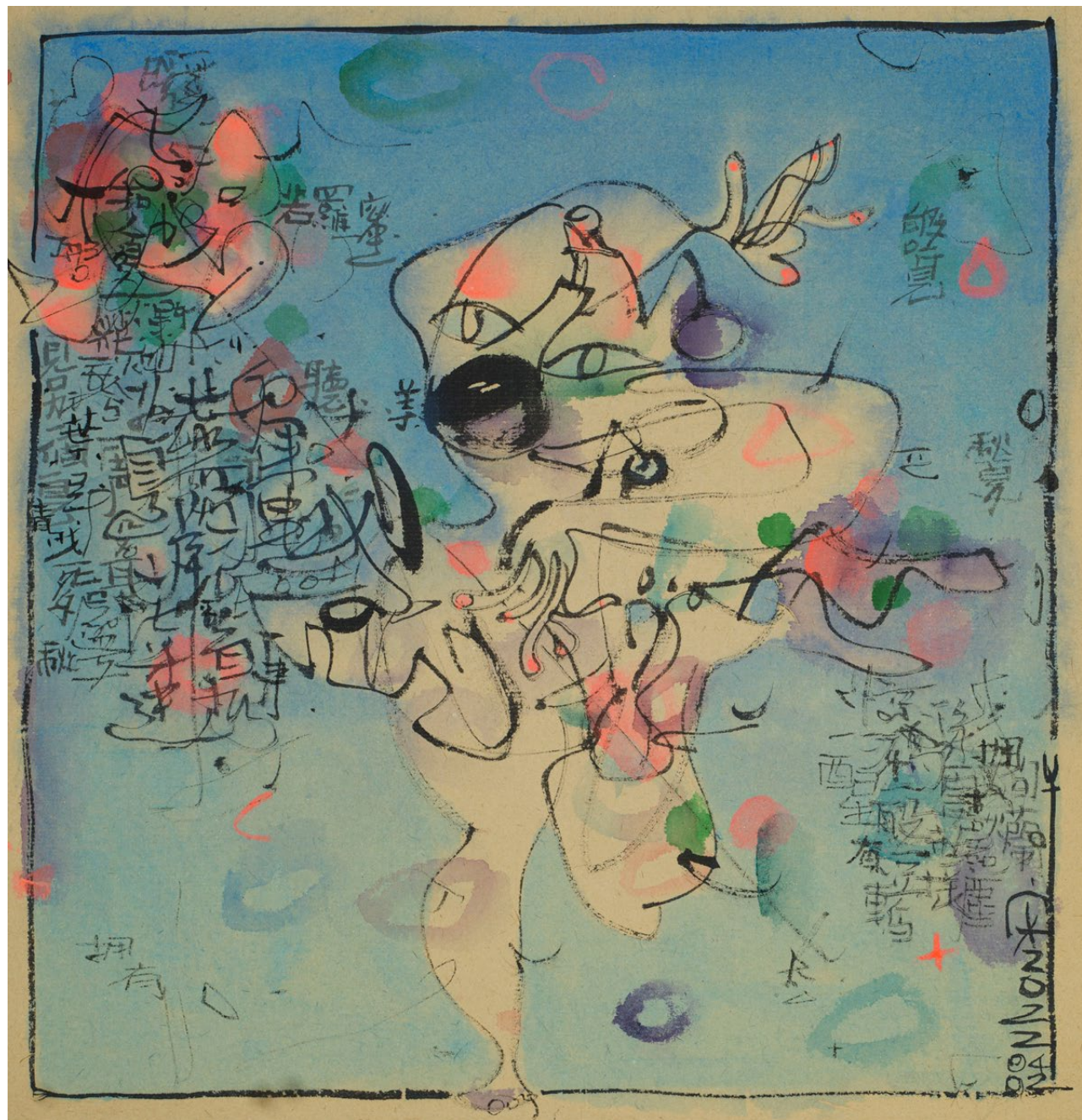


诗人生如夏花 B2  
Poet Summer Flowers B2  
43 x 41 cm  
纸本水墨 ink on paper, 2022





诗人生如夏花 B3  
Poet Summer Flowers B3  
43 x 41 cm  
纸本水墨 ink on paper, 2022







诗人生如夏花 Y1

Poet Summer Flowers Y1

43 x 41 cm

纸本水墨 ink on paper, 2022



诗人生如夏花 Y3  
Poet Summer Flowers Y3  
43 x 41 cm  
纸本水墨 ink on paper, 2022







She simply would like to express all the emotions that exist through her works. As simple as 1,2,3 - straight from her soul to the lines she created on her canvas and paper. What appears as seemingly effortless flowing lines, shapes and colours are the result of years of dedicated creative explorations.



传人之年 A  
Year of us 2024A  
47 x 49 cm  
纸本水墨 ink on paper, 2024



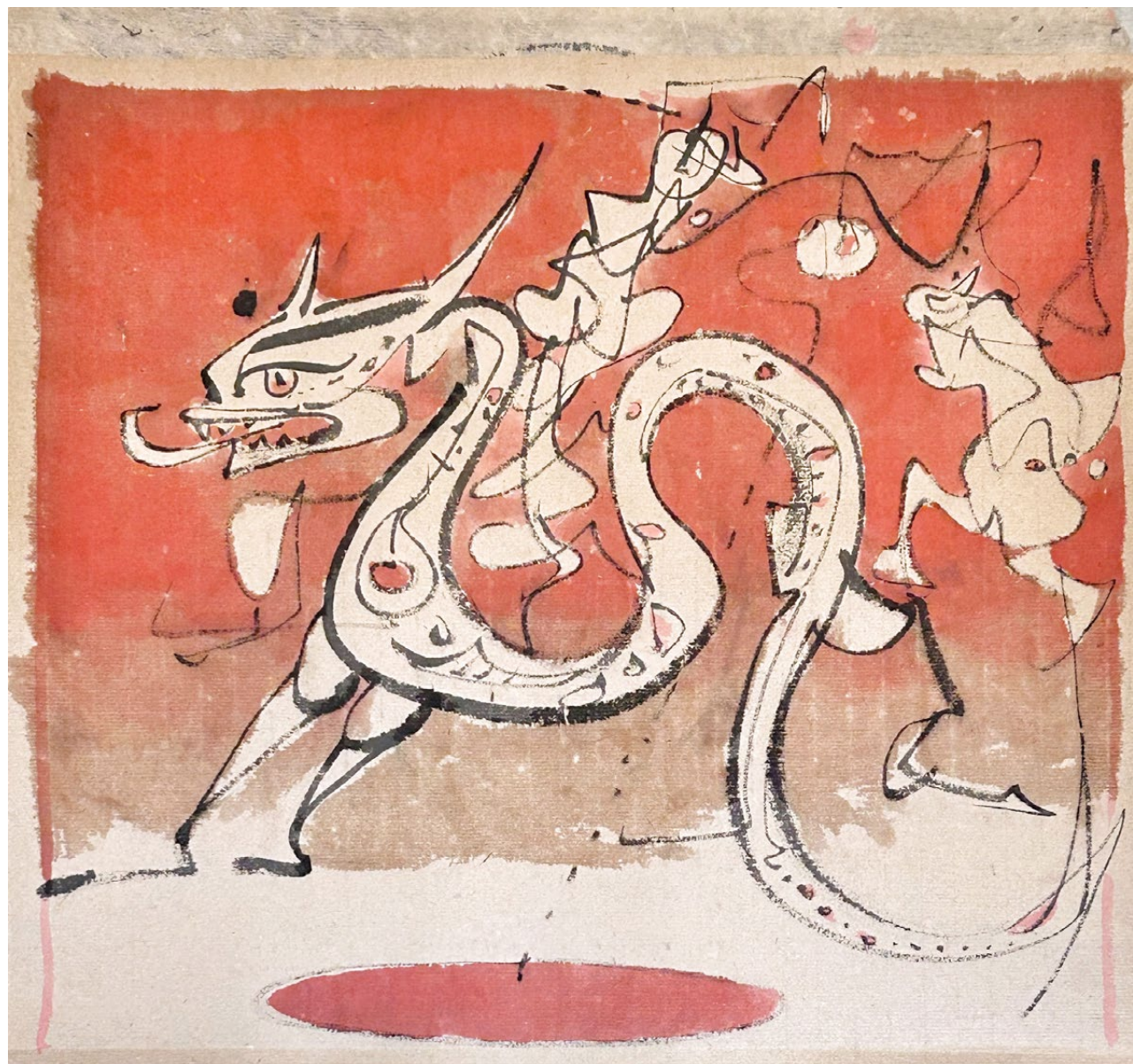


传人之年 B  
Year of us 2024B  
47 x 49 cm  
纸本水墨 ink on paper, 2024





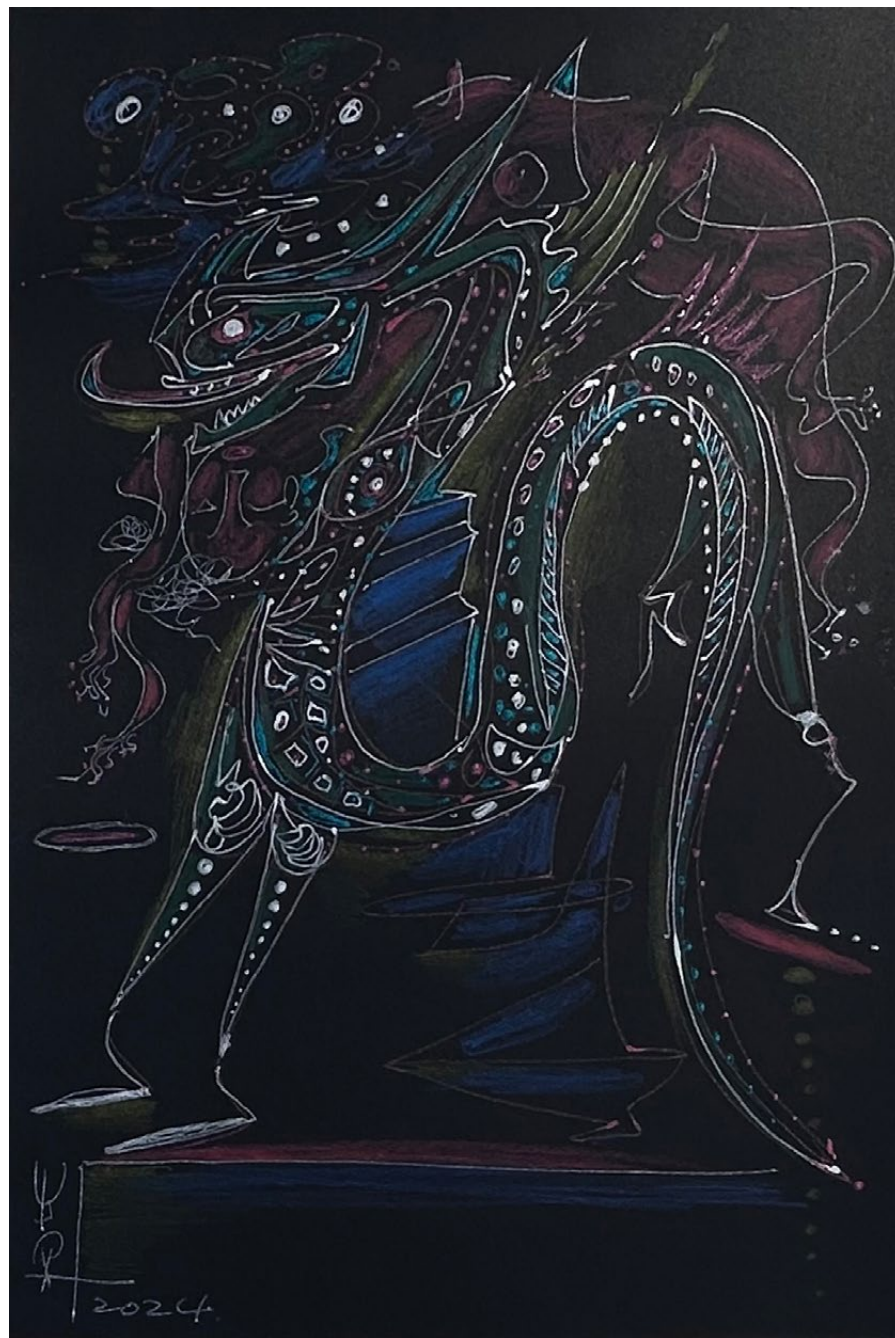
传人之年 C  
Year of us 2024C  
47 x 49 cm  
纸本水墨 ink on paper, 2024



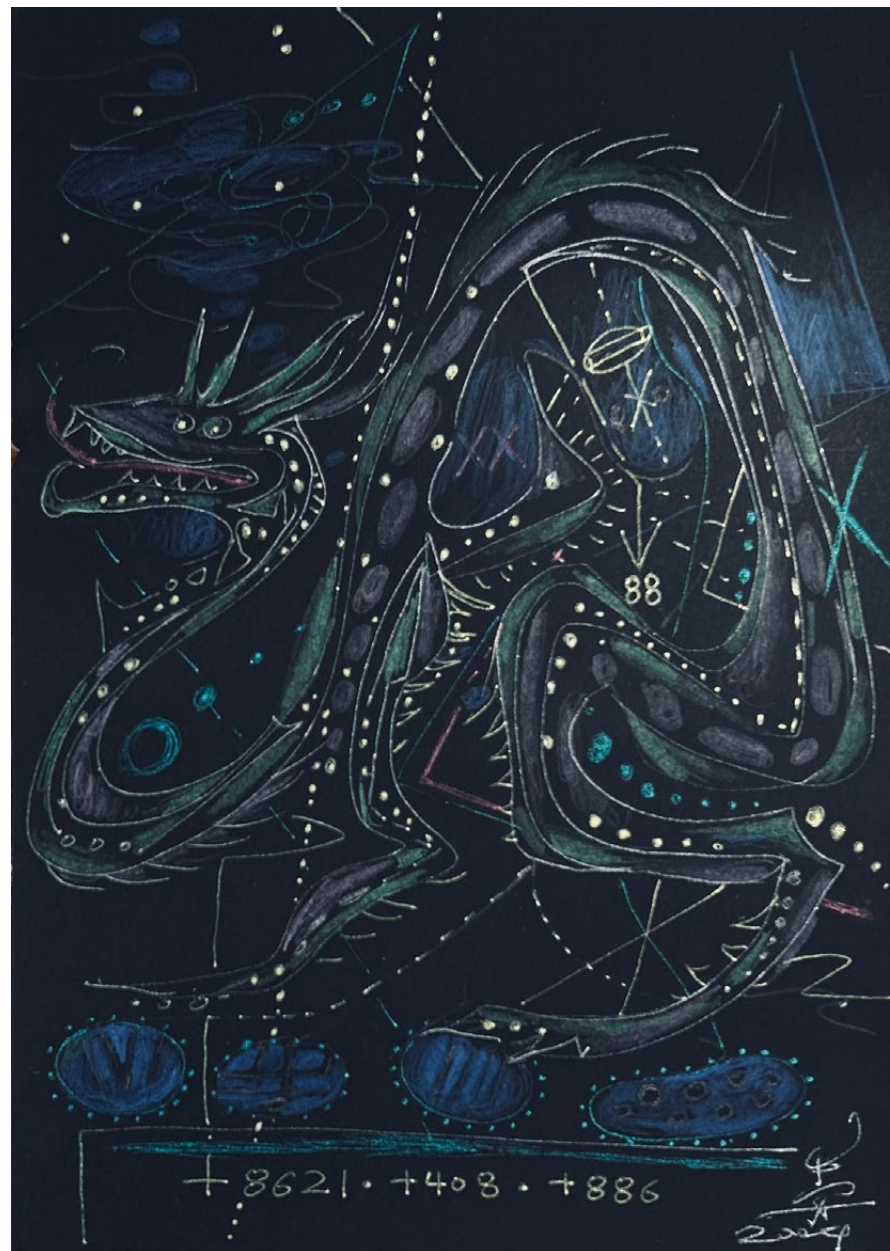


神话 - 龙 B&B  
The Myth - Dragon B&B  
27 x 19.5 cm

闪光啫喱笔，卡纸 gel pen on paper, 2024



神话 - 龙 4L  
**The Myth - Dragon 4L**  
27 x 19.5 cm  
闪光啫喱笔，卡纸 gel pen on paper, 2024







Ann Niu endeavours to capture the movements of what she calls the unforgettable souls. Skillfully, she poured them into her works - guided by her finely honed sensibility and intuition.





加州四重奏-海边

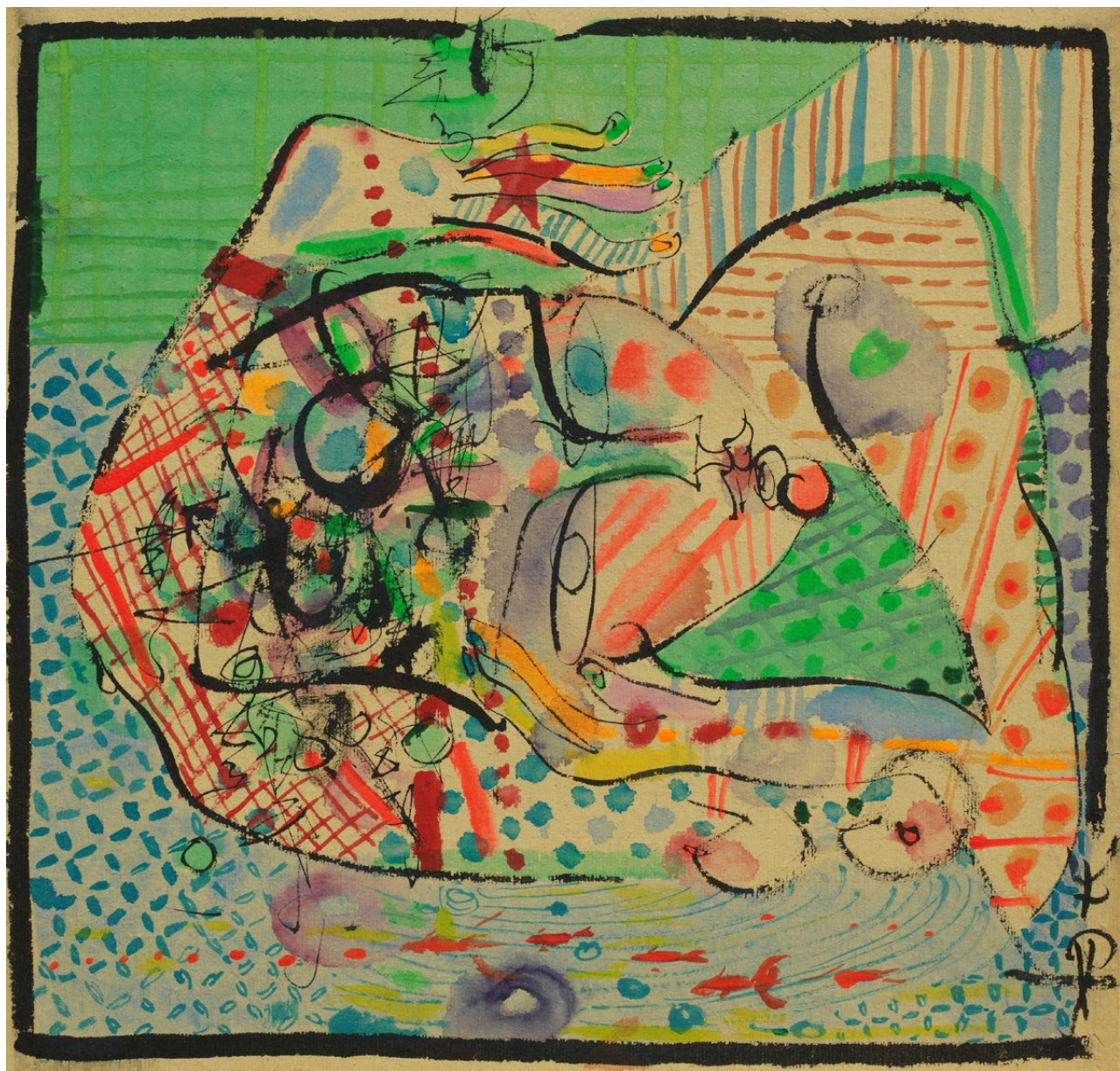
**CA Quartet-Beach**

81 x 142 cm each

布面丙烯颜料 acrylic on canvas, 2018



失眠者 2  
**Insomnia 2**  
42.5 x 40.5 cm  
纸上水墨，帆布装裱  
ink on paper mounted on canvas  
2009-2016







枕系列 — P1

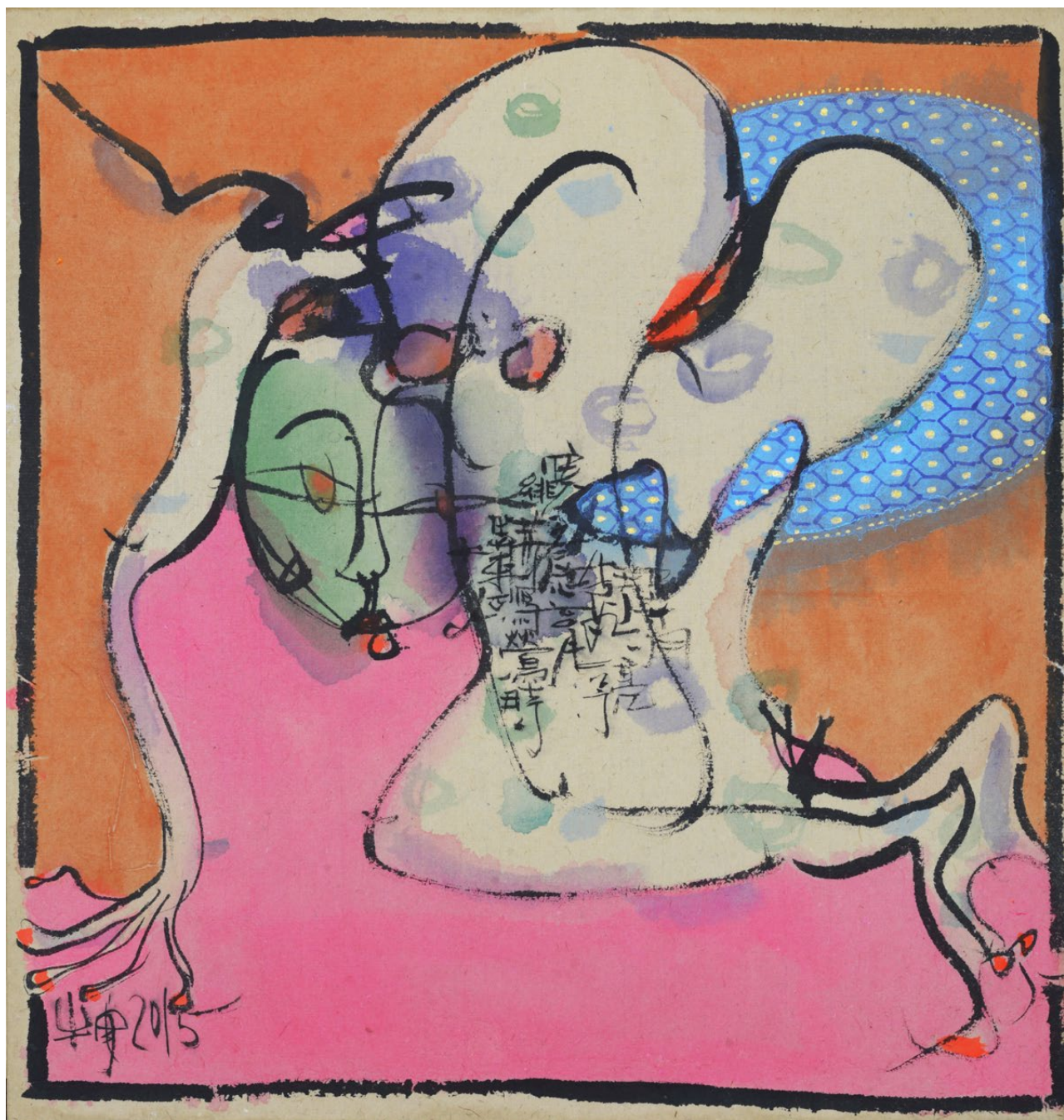
**Pillow — P1**

41.5 x 40.5 cm

纸上水墨，帆布装裱

ink on paper mounted on canvas, 2015





枕系列 — P2

**Pillow — P2**

43 x 40 cm

纸上水墨，帆布装裱

ink on paper mounted on canvas, 2015





*"I love making fans because I was gifted a fan by my calligraphy teacher. She told me that in the ancient times, a lot of scholars exchanges fans as a token of friendship."*





扇面 - 045

**Fan - 045**

55 x 22.7 cm

纸本水墨 ink on papers, 2023





扇面 - 043

**Fan - 043**

42 x 20.5 cm

纸本水墨 ink on papers, 2023





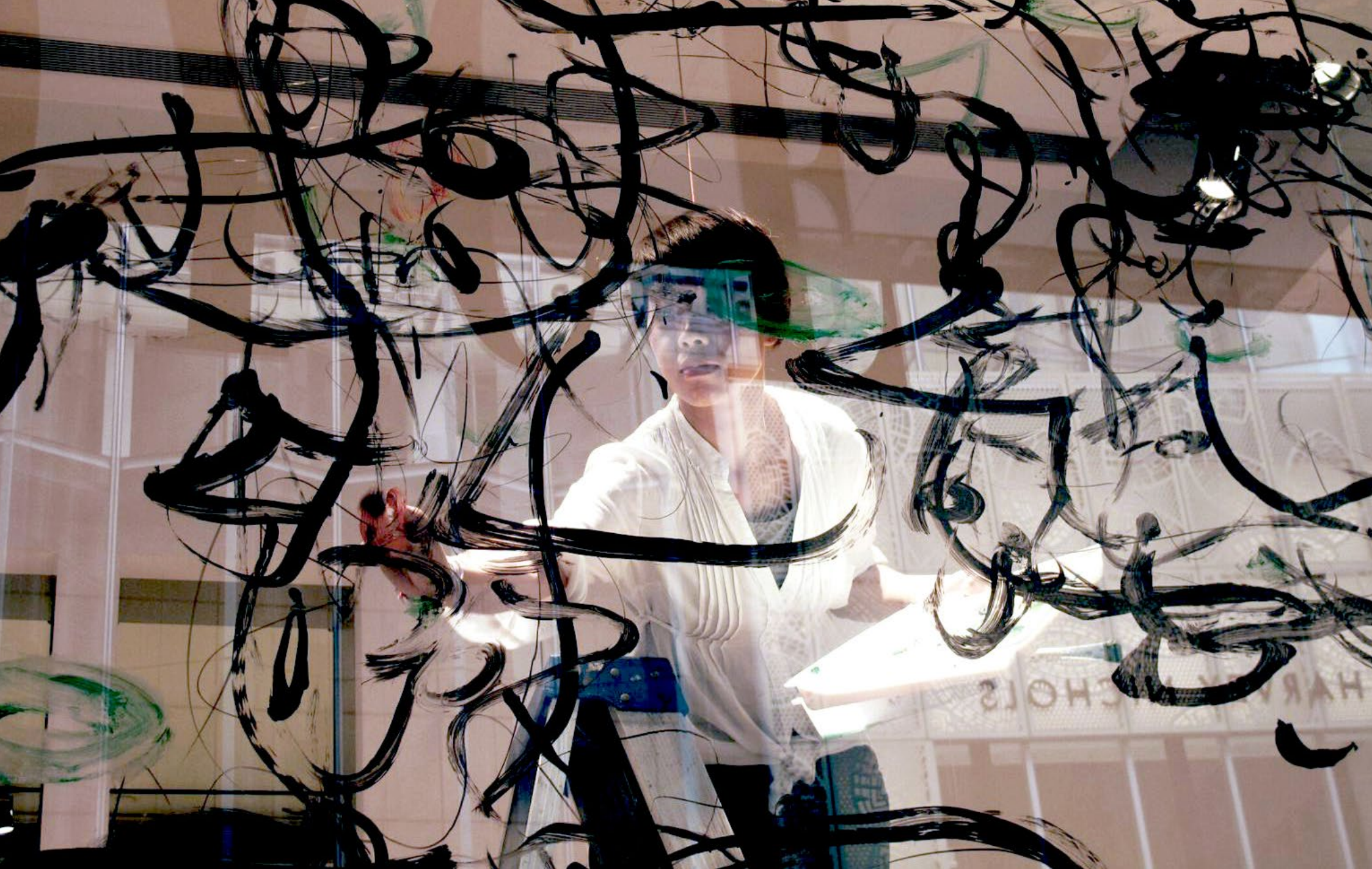
扇面 - 034

Fan - 034

45 x 20.7 cm

纸本水墨 ink on papers, 2023





at JOYCE, Central, Hong Kong, 2010





atelier ■ fine art ■ villa

+852 2521 0308 | [info@sinsinfineart.com](mailto:info@sinsinfineart.com) | [www.sinsinfineart.com](http://www.sinsinfineart.com)  
Unit A, 4/F., Kin Teck Industrial Building, 26 Wong Chuk Hang Road, Hong Kong